

LAMPIRAN

Lampiran 1 Tabulasi Data

<i>Current Ratio (CR)</i>					
BUMN					
Kode perusahaan	Tahun				
	2018	2019	2020	2021	2022
KAEF	1,3439	0,9936	0,8978	1,0541	0,7294
INAF	1,0487	1,8808	1,3561	1,3504	0,8765
PEHA	1,9238	1,7713	7,5111	1,2966	1,336
BUMS					
DVLA	2,889	2,9133	2,5191	2,5653	3,002
KLBF	4,6577	4,3547	4,116	4,4452	3,7712
MERK	1,3719	2,5085	2,5471	2,7149	3,3278
PYFA	2,7575	2,4689	2,8904	1,2962	1,8191
SIDO	4,1902	4,1235	3,2688	3,755	4,0555
TSPC	2,5216	2,7808	2,9587	3,2919	2,4833

Debt to Asset Ratio (DAR)					
BUMN					
Kode perusahaan	Tahun				
	2018	2019	2020	2021	2022
KAEF	0,634	0,5961	0,5954	0,5928	0,5412
INAF	0,6557	0,6351	0,7488	0,7473	0,9437
PEHA	0,5773	0,6081	0,6133	0,597	0,5727
BUMS					
DVLA	0,2868	0,2863	0,3324	0,338	0,3014
KLBF	0,1571	0,0176	0,19	0,1715	0,1888
MERK	0,5897	0,3408	0,3411	0,3335	0,2702
PYFA	0,3642	0,3463	0,3104	0,7927	0,7091
SIDO	0,1303	0,1335	0,1631	0,1469	0,1411
TSPC	0,3097	0,3083	0,2205	0,1965	0,3335

Return On Assets (ROA)					
BUMN					
Kode perusahaan	Tahun				
	2018	2019	2020	2021	2022
KAEF	0,0472	0,0009	0,0012	0,0163	-0,0054
INAF	-0,0226	0,0058	1,7522	-0,0187	-0,2793
PEHA	0,0713	0,0488	2,5399	0,0149	0,0063
BUMS					
DVLA	0,1192	0,1212	8,1579	0,703	0,0743
KLBF	0,1376	0,1252	1,2407	0,1259	0,1266
MERK	0,921	0,0868	7,7322	0,1283	0,1733
PYFA	0,0451	0,049	9,6705	0,0068	0,1812
SIDO	0,1989	0,2283	2,4263	0,3099	0,2707
TSPC	0,0687	0,0711	9,1642	0,091	0,0916

Lampiran 2 Hasil Olah Data dengan SPSS
Hasil Analisis Statistik Deskriptif Sebelum Transform
Descriptive Statistics

	N	Minimum	Maximum	Mean	Std. Deviation
CR	38	.90	4.66	2.6916	1.07513
DAR	38	.02	.79	.3679	.20479
ROA	38	.00	9.67	1.1365	2.67997
Valid N (listwise)	38				

Hasil Uji Normalitas Sebelum Transform

Tests of Normality

	KODE_PERUSAHAAN	Kolmogorov-Smirnov ^a			Shapiro-Wilk		
		Statistic	df	Sig.	Statistic	df	Sig.
CR	BUMN	.213	9	.200*	.900	9	.255
	BUMS	.136	25	.200*	.954	25	.316
DAR	BUMN	.238	9	.149	.894	9	.218
	BUMS	.237	25	.001	.822	25	.001
ROA	BUMN	.280	9	.041	.834	9	.049
	BUMS	.477	25	.000	.396	25	.000

*. This is a lower bound of the true significance.

a. Lilliefors Significance Correction

Hasil Analisis Statistik Deskriptif Sesudah Transform
Descriptive Statistics

	N	Minimum	Maximum	Mean	Std. Deviation
SQRT_CR	34	.95	2.16	1.5997	.34615
SQRT_DAR	34	.13	.97	.5688	.18606
SQRT_ROA	34	.03	.56	.2858	.14355
Valid N (listwise)	34				

Hasil Uji Normalitas Sesudah Transform

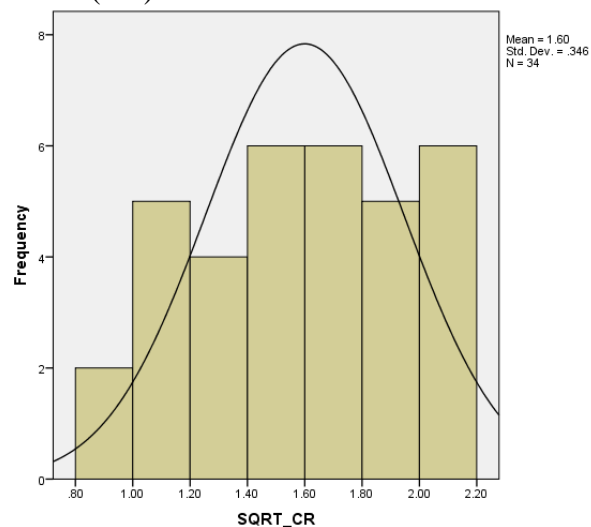
Tests of Normality

	KODE_PERUSAHAA N	Kolmogorov-Smirnov ^a			Shapiro-Wilk		
		Statistic	df	Sig.	Statistic	df	Sig.
SQRT_CR	BUMN	.188	9	.200 [*]	.911	9	.323
	BUMS	.148	25	.163	.950	25	.252
SQRT_DAR	BUMN	.269	9	.059	.905	9	.285
	BUMS	.160	25	.100	.924	25	.064
SQRT_ROA	BUMN	.180	9	.200 [*]	.912	9	.329
	BUMS	.123	25	.200 [*]	.975	25	.775

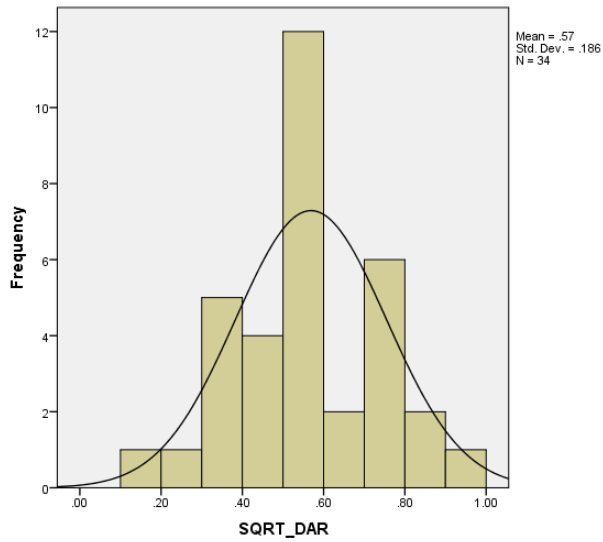
*. This is a lower bound of the true significance.

a. Lilliefors Significance Correction

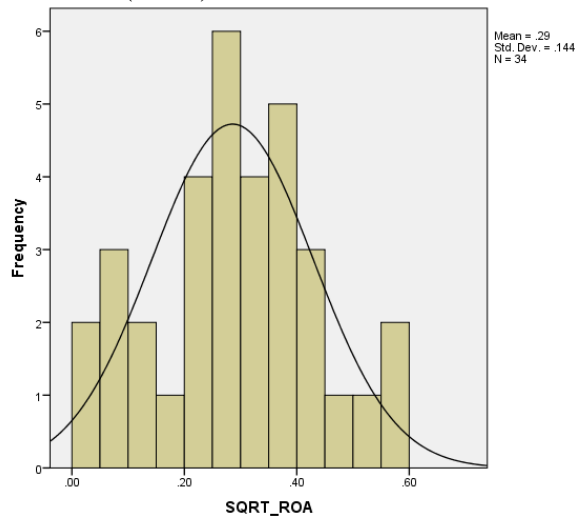
Kurva Variabel *Current Ratio (CR)* Setelah Transform



Kurva Variabel *Debt to Asset Ratio (DAR)* Setelah Transform



Kurva Variabel *Return On Assets (ROA)* Setelah Transform



Hasil Uji Statistik

Group Statistics

	KODE_PERUSAHAAN	N	Mean	Std. Deviation	Std. Error Mean
SQRT_CR	BUMN	9	1.1682	.16388	.05463
	BUMS	25	1.7550	.24671	.04934
SQRT_DAR	BUMN	9	.7951	.08699	.02900
	BUMS	25	.4874	.13775	.02755
SQRT_ROA	BUMN	9	.1306	.08608	.02869
	BUMS	25	.3416	.11654	.02331

Hasil Uji *Independent Sample Test*

Independent Samples Test

	Levene's Test for Equality of Variances	t-test for Equality of Means
--	---	------------------------------

	F	Sig.	t	df	Sig. (2-tailed)	Mean Difference	Std. Error Difference	95% Confidence Interval of the Difference	
								Lower	Upper
Equal variances assumed	1.744	.196	-6.596	32	.000	-.58678	.08895	-.76797	-.40558
SQRT _CR Equal variances not assumed			-7.971	21.589	.000	-.58678	.07361	-.73961	-.43395
Equal variances assumed	3.043	.091	6.234	32	.000	.30770	.04936	.20716	.40823
SQRT _DAR Equal variances not assumed			7.693	22.776	.000	.30770	.04000	.22491	.39048
Equal variances assumed	.498	.485	-4.949	32	.000	-.21106	.04265	-.29794	-.12419
SQRT _ROA Equal variances not assumed			-5.710	19.248	.000	-.21106	.03697	-.28837	-.13376